

Westborough FOCUS



Liberal Democrats

Summer 2020

Find us on Facebook – **Westborough Focus Team Liberal Democrats**

Fighting Crime in Westborough— together

Unfortunately, burglary tends to increase during the summer months.

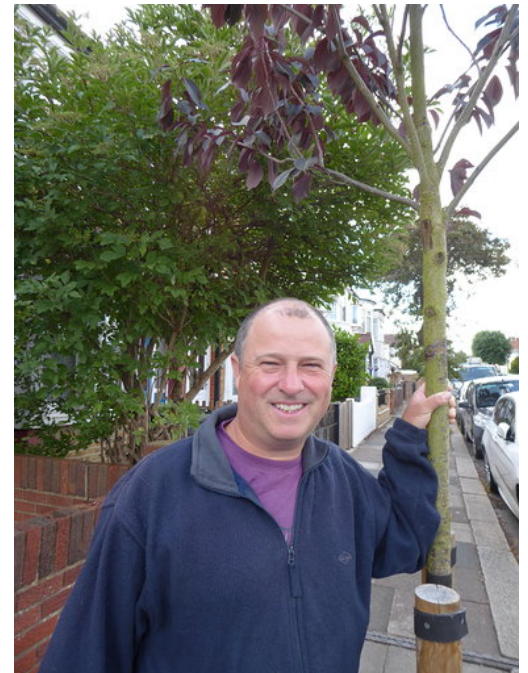
However, we can all do a few simple things to make ourselves less likely to be victims of burglary. The police advise:

- close and lock all doors and windows, even if you're 'just popping out'
- make sure that all keys and valuables are out of sight
- keep handbags away from the letterbox or cat flap
- leave lights and / or a radio on when the house is empty
- lock all sheds and garages
- lock your bike inside a secure shed or garage, to a robust fitting bolted to the ground or wall

Further tips on reducing the risk of crime can be found online at:

www.police.uk

Reminder — to contact the police in a non-emergency visit **www.essex.police.uk** or call **101**



Focus Team Leader Billy Boulton admiring a new tree on Electric Avenue.

Southend LibDem Group leader Councillor **Carole Mulroney** is leading plans to plant thousands of trees across the borough starting with 1,000 over 3 years, as well as 2,500 new shrubs.

Contact us:

If you have any local issues you would like us to take action on, please e-mail
billy3116@yahoo.co.uk
or message us through Facebook

Can you help?

If you could deliver leaflets in your road or display a poster at election time, please e-mail

billy3116@yahoo.co.uk

Join the Lib Dems!

libdems.org.uk/join

The Liberal Democrats will use any personal data we collect in accordance with our privacy policy at www.libdems.org.uk/privacy. To exercise your legal data rights, email data.protection@libdems.org.uk

Fly-tipping on the rise

Fly-tipping increased significantly across the UK during 'lockdown', although Southend actually bucked the trend and saw slightly less than in previous years. However the problem has certainly not gone away, as Westborough residents know only too well.

Veolia (who manage waste collection for Southend Council) will collect bulky waste from just £8. Book collection on their Bulky Waste Collection Portal www.southend.gov.uk/recycling or call 0203 567 6955 (charged at local rates)

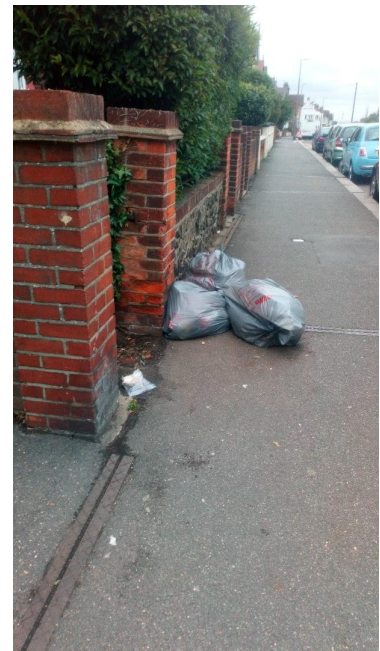
The **maximum penalty for fly-tipping is an unlimited fine or up to 5 years in prison** – also if you ask an unlicensed waste collector to take your rubbish away and they dump it illegally, **you can still be fined**. Don't take the risk!

If you witness fly-tipping **please report it online www.southend.gov.uk/MySouthend** (or anonymously at 'Fixmystreet.com'). The more information the Council have, the more likely they are to catch fly-tippers, who are often repeat offenders.



Southend Cabinet Member for the Environment, Lib Dem Councillor **Carole Mulrone**y says,

*There is no excuse for fly-tipping which is why we take a zero-tolerance approach. We **will** identify and fine fly-tippers wherever possible."*



What did the Council do for us during the coronavirus crisis?

Southend Council's Joint Administration has been working non-stop throughout lockdown and now as we ease back towards normality to do the best it can for the people of Southend.

- Southend Coronavirus Action supported **over 1,100 households** with tasks including delivering emergency food parcels, shopping and medication
- Over **120 rough sleepers** found emergency accommodation
- £35 million in grants paid out to **small businesses**
- **200, 000 items of PPE** sourced and distributed
- Support given to known previous sufferers of **domestic abuse**
- Supported local **COVID testing** at Southend Airport
- All **waste collections** maintained throughout lockdown
- and much more.

We want to say a huge **thank you** to everybody who has helped keep the country going during this incredibly difficult time – health workers, retailers, waste collectors and many others. Also a huge thank you to everybody who has followed the social distancing guidelines and helped prevent the situation from being even worse.